

(56)

References Cited

U.S. PATENT DOCUMENTS

2009/0167644 A1 7/2009 White et al.
2010/0156766 A1 6/2010 Levey et al.
2011/0007067 A1 1/2011 Ryu et al.
2011/0130981 A1 6/2011 Chaji et al.
2011/0227505 A1 9/2011 Park et al.

2011/0304489 A1* 12/2011 Christer et al. 341/118
2012/0104235 A1 5/2012 Sumi et al.

OTHER PUBLICATIONS

EPO Search Report dated Jun. 22, 2016, for corresponding European
Patent application 16166735.7, (8 pages).

* cited by examiner

FIG. 1

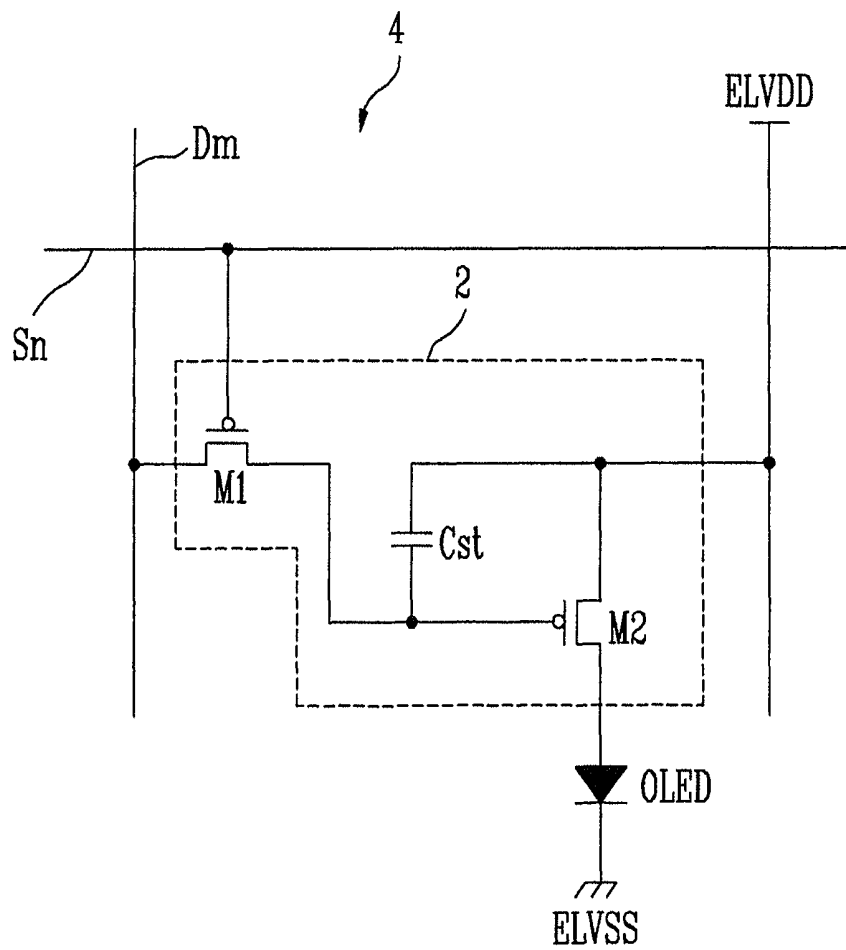


FIG. 2

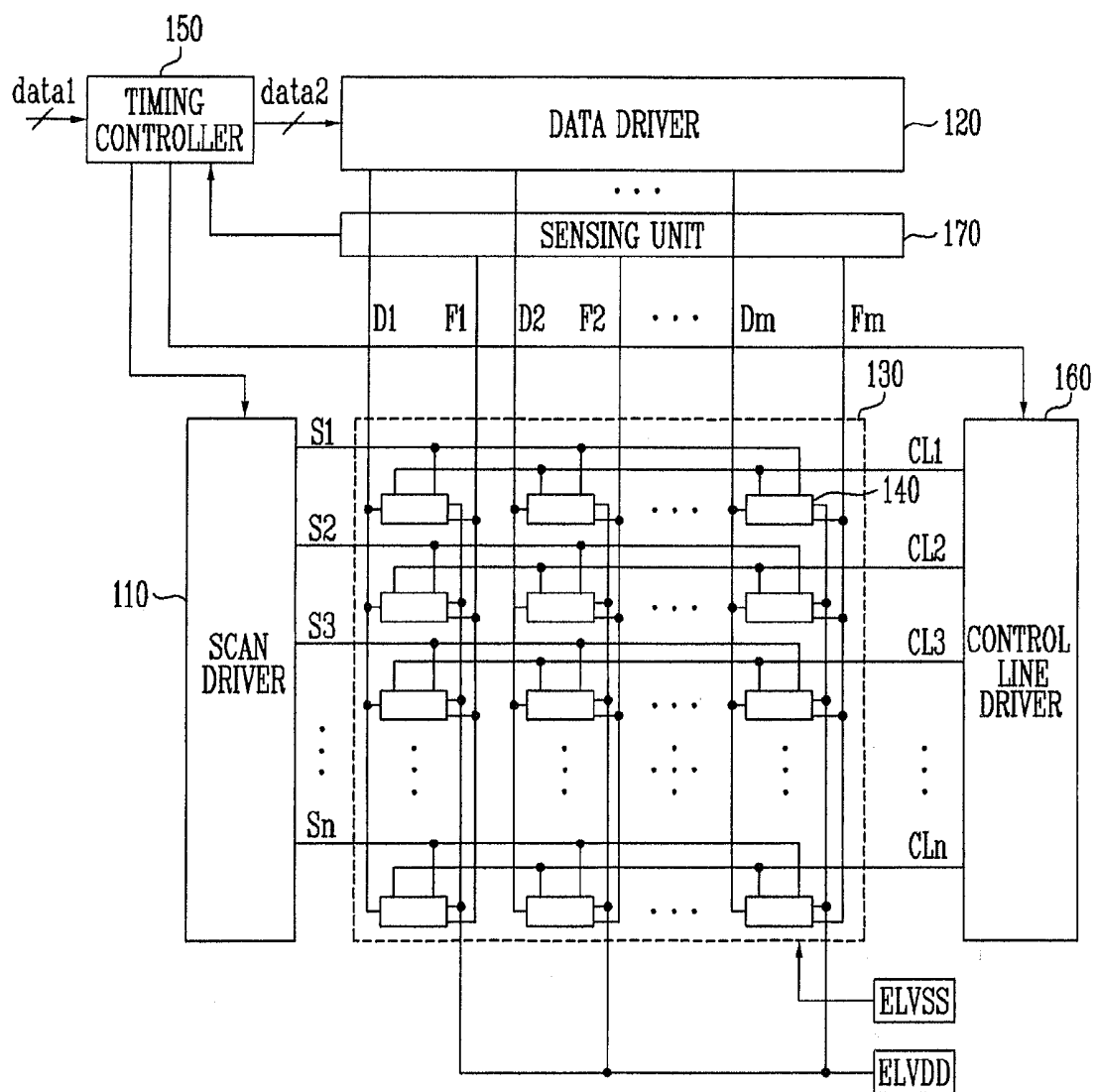


FIG. 3

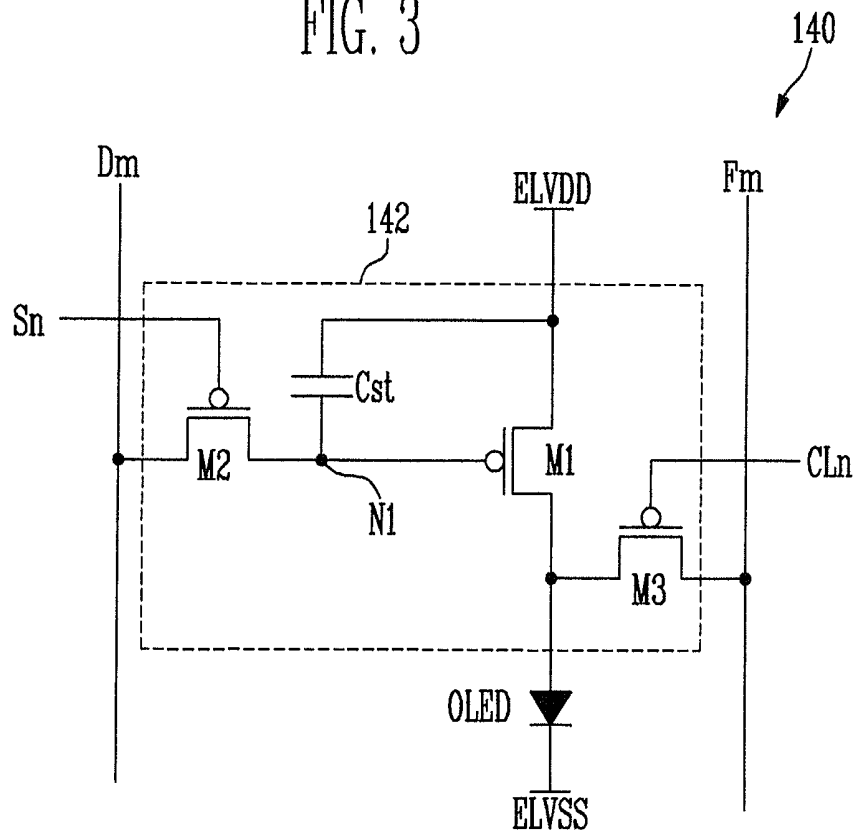


FIG. 4

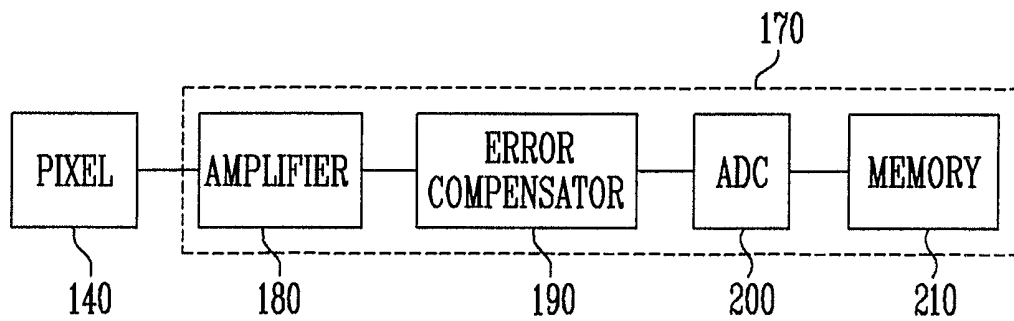


FIG. 5

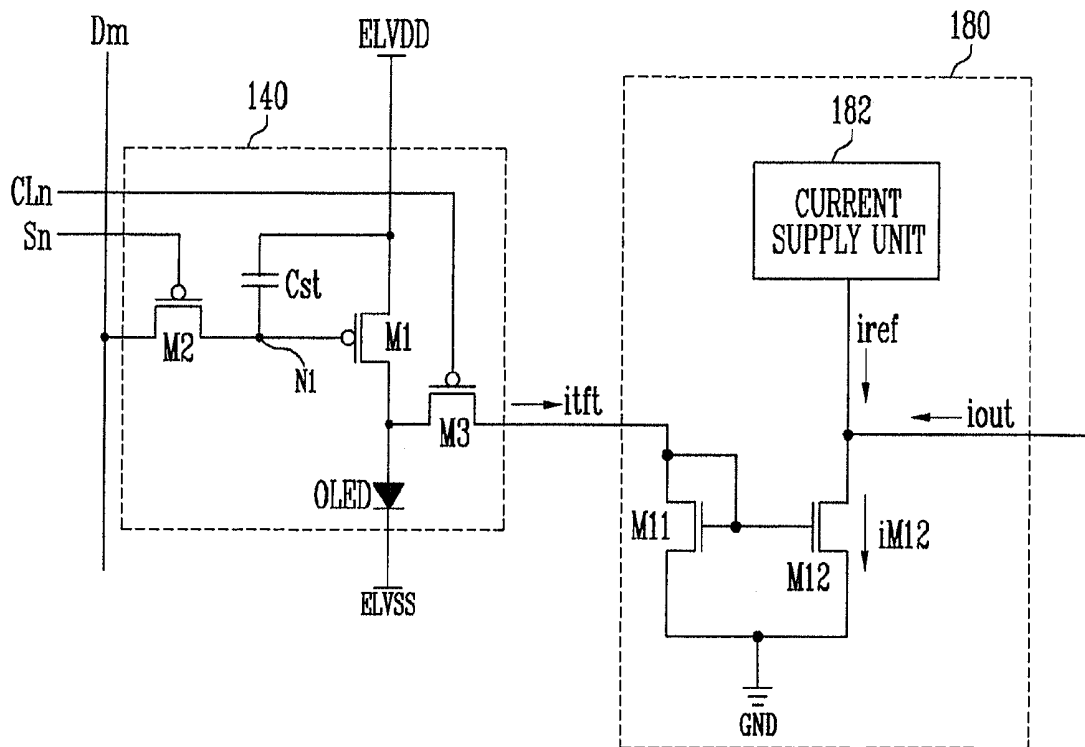


FIG. 6

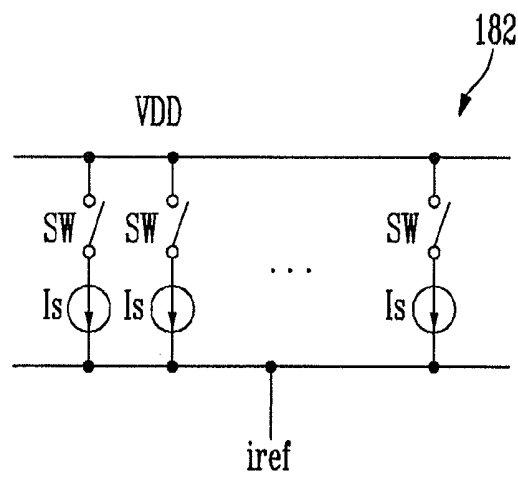


FIG. 7

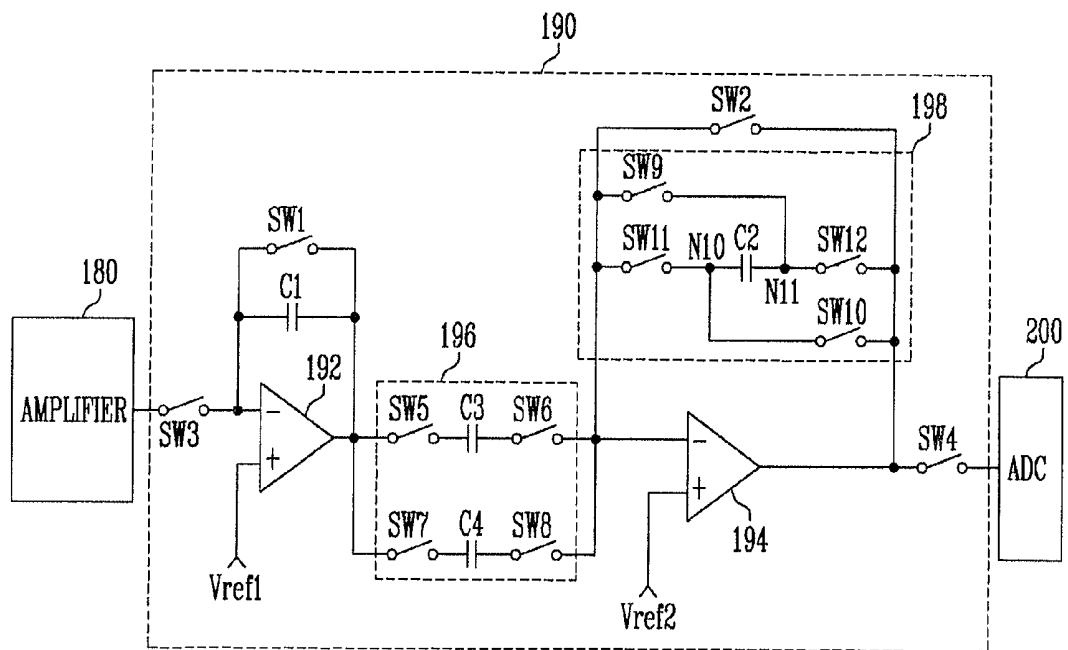


FIG. 8

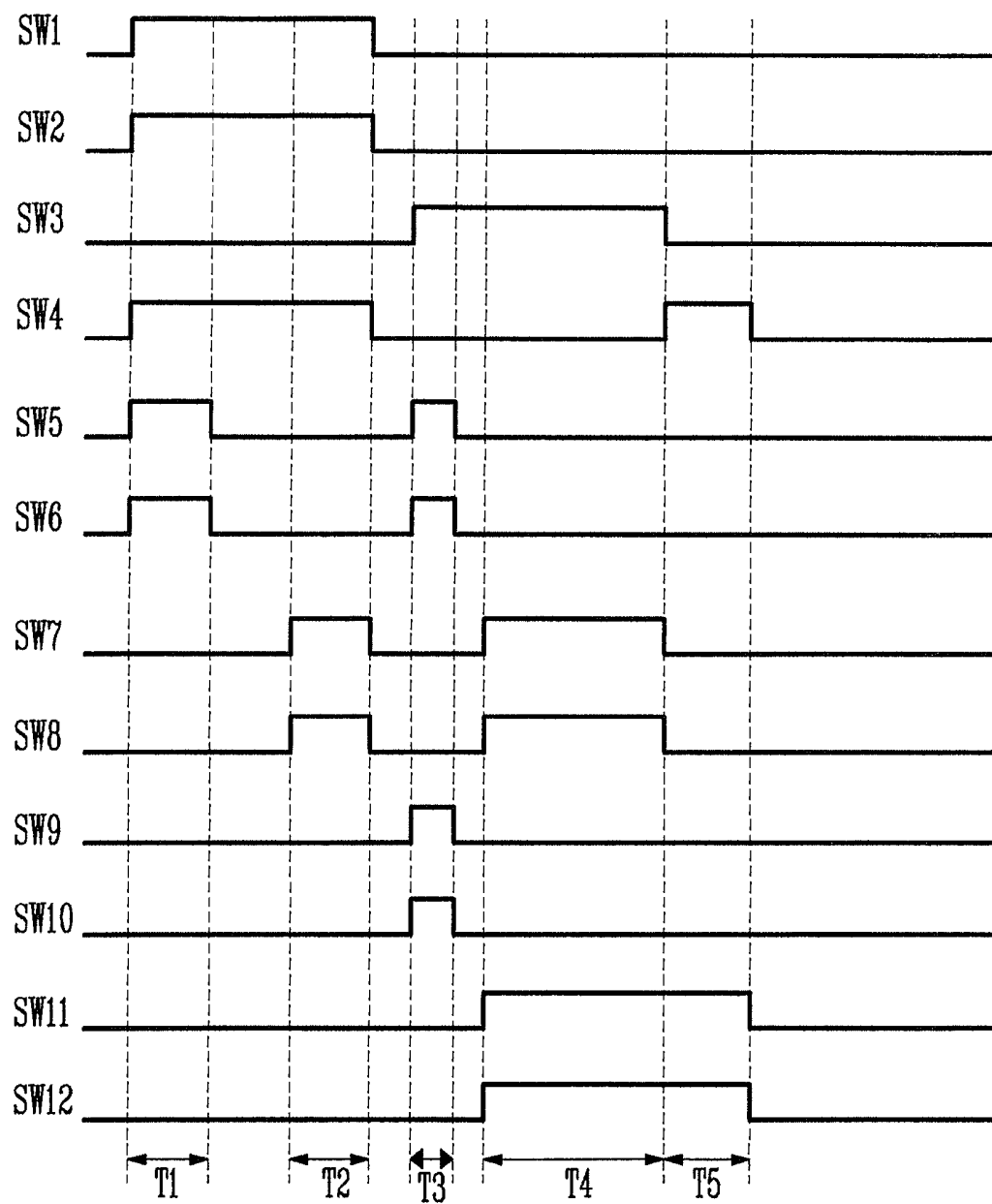


FIG. 9

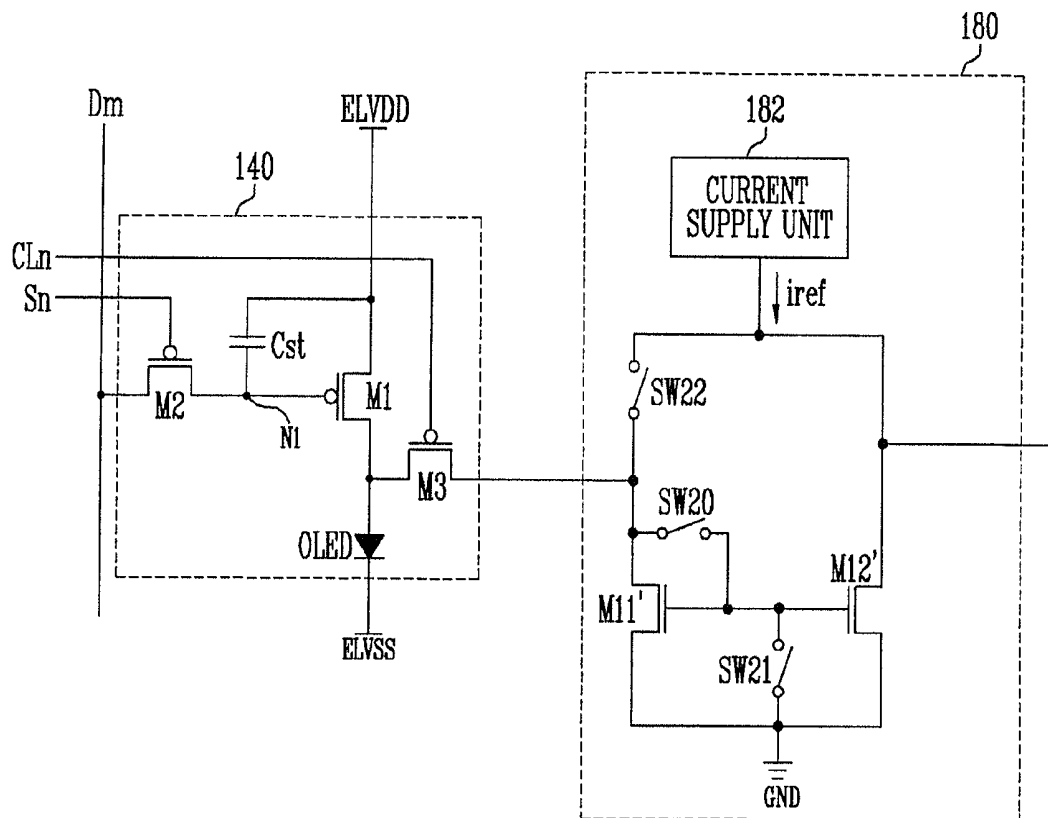
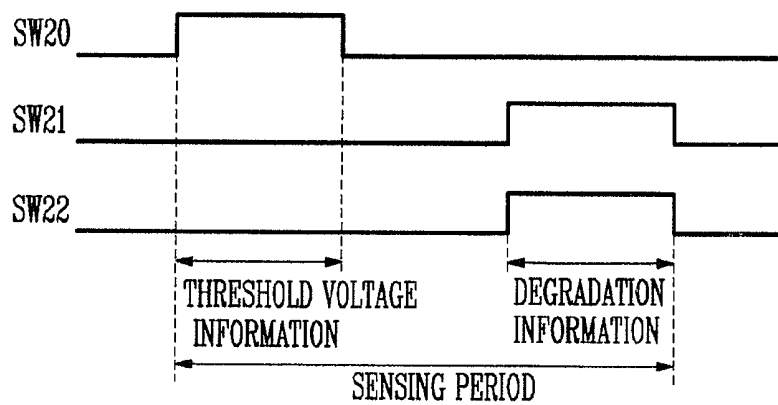


FIG. 10



ERROR COMPENSATOR AND ORGANIC LIGHT EMITTING DISPLAY DEVICE USING THE SAME

CROSS-REFERENCE TO RELATED APPLICATION

This application claims priority to and the benefit of Korean Patent Application No. 10-2012-0139059, filed on Dec. 3, 2012, in the Korean Intellectual Property Office, the entire content of which is incorporated herein by reference.

BACKGROUND

1. Field

The following description relates to an error compensator and an organic light emitting display device using the same.

2. Description of the Related Art

Various types of flat panel display devices have been developed which reduce weight and volume as compared with cathode ray tubes. These flat panel display devices include a liquid crystal display, a field emission display, a plasma display panel, an organic light emitting display device, and the like.

Among these flat panel display devices, the organic light emitting display device displays images using organic light emitting diodes that emit light through recombination of electrons and holes. The organic light emitting display device has a fast response speed and is driven with low power consumption.

SUMMARY

Aspects of embodiments of the present invention are directed toward an error compensator that can improve image quality and an organic light emitting display device using the same.

Aspects of embodiments are directed toward an error compensator and an organic light emitting display device using the same, which can exactly extract information on the degradation of an organic light emitting diode and the threshold voltage of a driving transistor.

Embodiments also provide an error compensator and an organic light emitting display device using the same, which can exactly extract information on the degradation of an organic light emitting diode and the threshold voltage of a driving transistor, in which data is changed using extracted information, so that it is possible to display an image with improved image quality, regardless of the degradation of an organic light emitting diode and the threshold voltage of a driving transistor.

According to an embodiment of the present invention, an organic light emitting display device is provided to include: pixels each having a driving transistor and an organic light emitting diode; and a sensing unit extracting at least one of a first information including the threshold voltage of the driving transistor or a second information including the degradation of the organic light emitting diode from a pixel of the pixels, wherein the sensing unit includes: an amplifier amplifying a voltage corresponding to the at least one of the first information or the second information; and an error compensator compensating for error components of elements included in the amplifier and the error compensator.

The error components may include offset characteristics, noises and line resistances of the elements. The amplifier may include an eleventh transistor having a second electrode coupled to the pixel, having a first electrode coupled to, a

ground power source, and having a gate electrode coupled to the second electrode so that current flows from the pixel to the ground power source; a twelfth transistor coupled in the form of a current mirror to the eleventh transistor; and a current supply unit supplying a reference current to the eleventh transistor. The twelfth transistor may be formed to have a channel width wider than that of the eleventh transistor. The reference current may be set to have a current value lower than that of a second current to be flowed in the twelfth transistor, the second current mirroring a first current supplied to the eleventh transistor. A common terminal of the current supply unit and the twelfth transistor may be coupled to the error compensator.

The amplifier may further include a twentieth switch positioned between the gate electrode and the second electrode of the eleventh transistor; a twenty-first switch coupled between the ground power source and the gate electrodes of the eleventh and twelfth transistors; and a twenty-second switch coupled between the pixel and the common terminal of the current supply unit and the twelfth transistor. The twentieth transistor may be turned on during a period in which the first information is extracted, and the twenty-first and twenty-second switches may be turned on during a period in which the second information is extracted.

The error compensator may include a first operational amplifier (OP-AMP) and a second OP-AMP; a first switch and a first capacitor, coupled in parallel between a first input terminal and an output terminal of the first OP-AMP; a second switch coupled between a first input terminal and an output terminal of the second OP-AMP; a third switch coupled between the first input terminal and the amplifier; a fourth switch coupled between an external analog-digital converter and the output terminal of the second OP-AMP; a first storage unit coupled between the output terminal of the first OP-AMP and the first input terminal of the second OP-AMP; and a second storage unit coupled between the first input terminal and the output terminal of the second OP-AMP.

A first reference power source may be supplied to a second input terminal of the first OP-AMP, and a second reference power source may be supplied to a second input terminal of the second OP-AMP. The first storage unit may include a fifth switch, a third capacitor and a sixth switch, coupled in series between the output terminal of the first OP-AMP and the first input terminal of the second OP-AMP; and a seventh switch, a fourth capacitor and an eighth switch, coupled in parallel to the fifth switch, the third capacitor and the sixth switch between the output terminal of the first OP-AMP and the first input terminal of the second OP-AMP. The fifth and sixth switches may be turned on during a first period in the period in which the first and second switches are turned on, and the seventh and eighth switches may be turned on during a second period not overlapping with the first period in the period in which the first and second switches are turned on. The fourth switch may also be set to be in a turn-on state during the first and second periods.

The second storage unit may include a second capacitor coupled between tenth and eleventh nodes; a ninth switch coupled between the eleventh node and the first input terminal of the second OP-AMP; a tenth switch coupled between the tenth node and the output terminal of the second OP-AMP; an eleventh switch coupled between the tenth node and the first input terminal of the second OP-AMP; and a twelfth switch coupled between the eleventh node and the output terminal of the second OP-AMP. The fifth switch, the sixth switch, the ninth switch and the tenth switch may be turned on during a third period in the period in which the third switch is turned on, and the seventh switch, the eighth switch, the eleventh

switch and the twelfth switch may be turned on during a fourth period not overlapping with the third period in the period in which the third switch is turned on. The fourth period may be set to be longer than the third period.

The fourth switch, the eleventh switch and the twelfth switch may be turned on during a period posterior to the fourth period.

The organic light emitting display device may further include a data driver supplying a data signal to data lines coupled to the pixels; a scan driver supplying a scan signal to scan lines coupled to the pixels; and a timing controller changing bits of data supplied from the outside thereof and provides the data driver with the changed bits, corresponding to the at least one of the first information or the second information. The sensing unit may further include an analog-digital converter converting a voltage supplied from the error compensator into a digital value; and a memory storing the digital value, and providing the stored value to the timing controller so that the bits of the data are changed. Each pixel may include a transistor coupled between the sensing unit and a common node between the driving transistor and the organic light emitting diode, and turned on during the period in which the at least one of the first information or the second information is extracted.

According to an embodiment of the present invention, there is provided an error compensator, including: a first OP-AMP and a second OP-AMP; a first switch and a first capacitor, coupled in parallel between a first input terminal and an output terminal of the first OP-AMP; a second switch coupled between a first input terminal and an output terminal of the second OP-AMP; a first storage unit coupled between the output terminal of the first OP-AMP and the first input terminal of the second OP-AMP, and changing a voltage at the output terminal of the first OP-AMP and supplying the changed voltage to the first input terminal of the second OP-AMP; and a second storage unit coupled between the first input terminal and the output terminal of the second OP-AMP.

A first reference power source may be supplied to a second input terminal of the first OP-AMP, and a second reference power source may be supplied to a second input terminal of the second OP-AMP. The first input terminal may be a negative (-) input terminal, and the second input terminal may be a positive (+) input terminal. The first storage unit may include a fifth switch, a third capacitor and a sixth switch, coupled in series between the output terminal of the first OP-AMP and the first input terminal of the second OP-AMP; and a seventh switch, a fourth capacitor and an eighth switch, coupled in parallel to the fifth switch, the third capacitor and the sixth switch between the output terminal of the first OP-AMP and the first input terminal of the second OP-AMP. The fifth and sixth switches may be turned on during a first period in the period in which the first and second switches are turned on, and the seventh and eighth switches may be turned on during a second period not overlapping with the first period in the period in which the first and second switches are turned on. The second storage unit may include a second capacitor coupled between tenth and eleventh nodes; a ninth switch coupled between the eleventh node and the first input terminal of the second OP-AMP; a tenth switch coupled between the tenth node and the output terminal of the second OP-AMP; an eleventh switch coupled between the tenth node and the first input terminal of the second OP-AMP; and a twelfth switch coupled between the eleventh node and the output terminal of the second OP-AMP. After a predetermined voltage is charged in the third and fourth capacitors, the fifth switch, the sixth switch, the ninth switch and the tenth switch may be

turned on so that a voltage is primarily stored in the second capacitor, and the seventh switch, the eighth switch, the eleventh switch and the twelfth switch may be turned on so that a voltage is secondarily stored in the second capacitor.

In the error compensator and the organic light emitting display device according to an embodiment of the present invention, error components of external compensation elements are removed using an error compensator, and accordingly, it is possible to exactly extract information corresponding to the threshold voltage of a driving transistor and the degradation of an organic light emitting diode included in each pixel.

BRIEF DESCRIPTION OF THE DRAWINGS

The accompanying drawings, together with the specification, illustrate exemplary embodiments of the present invention, and, together with the description, serve to explain the principles of the present invention.

FIG. 1 is a circuit diagram illustrating a pixel of a related art organic light emitting display device.

FIG. 2 is a block diagram illustrating an organic light emitting display device according to an embodiment of the present invention.

FIG. 3 is a circuit diagram illustrating a pixel according to an embodiment of the present invention.

FIG. 4 is a block diagram illustrating an embodiment of a sensing unit shown in FIG. 2.

FIG. 5 is a circuit diagram illustrating an embodiment of an amplifier shown in FIG. 4.

FIG. 6 is a circuit diagram illustrating an embodiment of a current supply unit shown in FIG. 5.

FIG. 7 is a circuit diagram illustrating an error compensator according to an embodiment of the present invention.

FIG. 8 is a waveform diagram illustrating an operation process of the error compensator shown in FIG. 7.

FIG. 9 is a circuit diagram illustrating another embodiment of the amplifier.

FIG. 10 is a waveform diagram illustrating an operation process of the amplifier shown in FIG. 9.

DETAILED DESCRIPTION

Hereinafter, certain exemplary embodiments according to the present invention will be described with reference to the accompanying drawings. Here, when a first element is described as being coupled to a second element, the first element may be not only directly coupled to the second element but may also be indirectly coupled to the second element via one or more third elements. Further, some of the elements that are not essential to the complete understanding of the invention are omitted for clarity. Also, like reference numerals refer to like elements throughout.

FIG. 1 is a circuit diagram illustrating a pixel of a related art organic light emitting display device.

Referring to FIG. 1, the pixel 4 of the related art organic light emitting display device includes an organic light emitting diode OLED, and a pixel circuit 2 coupled to a data line Dm and a scan line Sn so as to control the organic light emitting diode OLED.

An anode electrode of the organic light emitting diode OLED is coupled to the pixel circuit 2, and a cathode electrode of the organic light emitting diode OLED is coupled to a second power source ELVSS. When a scan signal is supplied to the scan line Sn, the pixel circuit 2 controls the amount of current supplied to the organic light emitting diode OLED, corresponding to a data signal supplied to the data line

Dm. To this end, the pixel circuit **2** includes a second transistor M2 coupled between a first power source ELVDD and the organic light emitting diode OLED, a first transistor M1 coupled with the second transistor M2, the data line Dm and the scan line Sn, and a storage capacitor Cst coupled between a gate electrode and a first electrode of the second transistor M2.

A gate electrode of the first transistor M1 is coupled to the scan line Sn, and a first electrode of the first transistor M1 is coupled to the data line Dm. A second electrode of the first transistor M1 is coupled to one terminal of the storage capacitor Cst. Here, the first electrode is referred to as any one of source and drain electrodes, and the second electrode is set as an electrode different from the first electrode. For example, if the first electrode is referred to as a source electrode, then the second electrode is referred to as a drain electrode. When the scan signal is supplied to the scan line Sn, the first transistor M1 coupled to the scan line Sn and the data line Dm is turned on to supply the data signal supplied from the data line Dm to the storage capacitor Cst. In this case, the storage capacitor Cst charges to a voltage corresponding to the data signal.

The gate electrode of the second transistor M2 is coupled to the one terminal of the storage capacitor Cst, and the first electrode of the second transistor M2 is coupled to the other terminal of the storage capacitor Cst and the first power source ELVDD. A second electrode of the second transistor M2 is coupled to the anode electrode of the organic light emitting diode OLED. The second transistor M2 controls the amount of current flowing from the first power source ELVDD to the second power source ELVSS via the organic light emitting diode OLED, corresponding to the voltage stored in the storage capacitor Cst. In this case, the organic light emitting diode OLED generates light corresponding to the amount of current supplied from the second transistor M2.

However, the organic light emitting display device has a problem in that an image with uniform luminance is not displayed by degradation of the organic light emitting diode OLED and a variation in threshold voltage of the second transistor M2. In order to solve such a problem, there has been proposed a method of compensating for the degradation of the organic light emitting diode OLED and the threshold voltage of the second transistor M2 from the outside of the pixel **4**. However, in the method of compensating for the degradation and the threshold voltage from the outside using micro-current flowing in the pixel **4**, exact information is not extracted by offsets and noises of elements included in an external compensation circuit, and therefore, exact compensation is not made.

FIG. **2** is a block diagram illustrating an organic light emitting display device according to an embodiment of the present invention.

Referring to FIG. **2**, the organic light emitting display device according to this embodiment includes a pixel unit **130** having pixels **140** positioned at intersection portions (crossing regions) of scan lines S1 to Sn and data lines D1 to Dm, a scan driver **110** driving the scan lines S1 to Sn, a data driver **120** driving the data lines D1 to Dm, a control line driver **160** driving control lines CL1 to CLn, and a timing controller **150** controlling the scan driver **110**, the data driver **120** and the control line driver **160**.

The organic light emitting display device according to this embodiment further includes a sensing unit **170** extracting threshold voltage information of a driving transistor and/or degradation information of an organic light emitting diode included in each pixel **140**, using feedback lines F1 to Fm.

The pixel unit **130** includes the pixels **140** positioned at intersection portions (crossing regions) of the scan lines S1 to

Sn and the data lines D1 to Dm. Each pixel **140** provides the sensing unit **170** with the threshold voltage information of the driving transistor and/or the degradation information of the organic light emitting diode during a sensing period. Each pixel **140** receives a data signal input during a driving period, and generates light with a set or predetermined luminance while controlling the amount of current supplied from a first power source ELVDD to a second power source ELVSS via the organic light emitting diode, corresponding to the received data signal.

The scan driver **110** supplies a scan signal to the scan lines S1 to Sn. For example, the scan driver **110** progressively supplies the scan signal to the scan lines S1 to Sn during the sensing and driving periods.

The data driver **120** receives a second data data2 supplied during the driving period, and generates a data signal using the supplied second data data2. The data signal generated in data driver **120** is supplied to the data lines D1 to Dm in synchronization with the scan signal. The data driver **120** may supply a specific data signal in synchronization with the scan signal during the sensing period. Here, the specific data signal is used to extract threshold voltage information of the driving transistor included in each pixel **140**, and may be set to any one of various gray scale values.

The control line driver **160** supplies a control signal to the control lines CL1 to CLn during the sensing period. For example, the control line driver **160** may progressively supply a control signal to the control lines CL1 to CLn during the sensing period. If the data signal is progressively supplied to the control lines CL1 to CLn, pixels **140** for each horizontal line are coupled to the feedback lines F1 to Fm.

The sensing unit **170** extracts threshold voltage information of the driving transistor and/or degradation information of the organic light emitting diode from each pixel **140** during the sensing period. For example, the sensing unit **170** may extract threshold voltage information and/or degradation information of the pixels **140** for each horizontal line, corresponding to the control signal supplied to the control lines CL1 to CLn.

The timing controller **150** controls the scan driver **110**, the data driver **120** and the control line driver **160**. The timing controller **150** receives threshold voltage information and/or degradation information supplied from the sensing unit **170**, and generates a second data data2 by changing a first data data1, corresponding to the supplied information.

FIG. **3** is a circuit diagram illustrating a pixel according to an embodiment of the present invention. For convenience of illustration, a pixel coupled to an m-th data line Dm and an n-th scan line Sn is shown in FIG. **3**.

Although the pixel **140** having three transistors M1 to M3 and one capacitor Cst has been illustrated in FIG. **3**, the present invention is not limited thereto. Practically, in the present invention, the pixel **140** may be selectively implemented as any one of various circuits currently known in the art, which can be electrically coupled to the sensing unit **170**.

Referring to FIG. **3**, the pixel **140** according to this embodiment includes an organic light emitting diode OLED, and a pixel circuit **142** controlling the amount of current supplied to the organic light emitting diode OLED.

An anode electrode of the organic light emitting diode OLED is coupled to the pixel circuit **142**, and a cathode electrode of the organic light emitting diode OLED is coupled to the second ELVSS. The organic light emitting diode OLED generates light with a set or predetermined luminance, corresponding to current supplied from the pixel circuit **142**.

The pixel circuit **142** supplies a set or predetermined current to the organic light emitting diode OLED, corresponding

to a data signal. To this end, the pixel circuit **142** includes first to third transistors **M1** to **M3** and a storage capacitor **Cst**.

A first electrode of the first transistor **M1** (driving transistor) is coupled to the first power source **ELVDD**, and a second electrode of the first transistor **M1** is coupled to the anode electrode of the organic light emitting diode **OLED**. The first transistor **M1** controls the amount of current supplied to the organic light emitting diode **OLED**, corresponding to the voltage applied to a first node **N1**.

A first electrode of the second transistor **M2** is coupled to the data line **Dm**, and a second electrode of the second transistor **M2** is coupled to the first node **N1**. A gate electrode of the second transistor **M2** is coupled to the scan line **Sn**. When a scan signal is supplied to the scan line **Sn**, the second transistor **M2** is turned on to electrically couple the data line **Dm** and the first node **N1** to each other.

A first electrode of the third transistor **M3** is coupled to the anode electrode of the organic light emitting diode **OLED**, and a second electrode of the third transistor **M3** is coupled to a feedback line **Fm**. A gate electrode of the third transistor **M3** is coupled to a control line **CLn**. When a control signal is supplied to the control line **CLn**, the third transistor **M3** is turned on to electrically couple the feedback line **Fm** and the anode electrode of the organic light emitting diode **OLED** to each other.

The storage capacitor **Cst** is coupled between the first power source **ELVDD** and the first node **N1**. The storage capacitor **Cst** stores a voltage corresponding to the data signal.

FIG. 4 is a block diagram illustrating an embodiment of the sensing unit shown in FIG. 2. For convenience of illustration, only one channel is shown in FIG. 4.

Referring to FIG. 4, the sensing unit **170** according to this embodiment includes an amplifier **180**, an error compensator **190**, an analog-digital converter (hereinafter, referred to as an "ADC") **200** and a memory **210**. Here, the amplifier **180**, the error compensator **190** and the like are formed for each channel, i.e., each of the feedback lines **F1** to **Fm**. The ADC **200** may be formed for each channel or may be formed to share a plurality of channels. The memory **210** is commonly coupled to all the channels, so as to store threshold voltage information and/or degradation information extracted from each channel.

The amplifier **180** amplifies voltage (and/or current) extracted from each pixel **140**. Practically, the amplifier **180** amplifies micro-voltage (and/or current) from each pixel **140** and supplies the amplified micro-voltage (and/or current) to the error compensator **190**.

The error compensator **190** removes an error component (an offset characteristic, noise, resistive component, etc.) so that desired information can be extracted. Practically, the error compensator **190** supplies only desired information to the ADC **200** by removing an error component caused by internal circuits of the amplifier **180** and the error compensator **190**. In this case, all error components caused by circuits between the pixel **140** and the ADC **200**, including an error component included in the information (voltage and/or current) amplified in the amplifier **180**, can be removed, and accordingly, it is possible to improve the reliability of the extracted information.

The ADC **200** converts, into a digital value, information supplied from the error compensator **190**, e.g., analog voltage including threshold voltage information of the driving transistor and/or degradation information of the organic light emitting diode included in each pixel.

The digital value converted in the ADC **200** is stored in the memory **210**. Practically, a digital value (threshold voltage

information and/or degradation information) corresponding to each pixel is stored in the memory **210**. The digital value stored in the memory **210** is supplied to the timing controller **150**. The timing controller **150** generates the second data **data2** by changing bits of the first data **data1** so that the threshold voltage information of the driving transistor and/or the degradation information of the organic light emitting diode is included in each pixel, using the digital value stored in the memory **210**.

FIG. 5 is a circuit diagram illustrating an embodiment of the amplifier shown in FIG. 4. Although transistors **M11** and **M12** are implemented as NMOS transistors in FIG. 5, the present invention is not limited thereto.

Referring to FIG. 5, the amplifier **180** includes a current supply unit **182**, an eleventh transistor **M11** and a twelfth transistor **M12**.

A second electrode of the eleventh transistor **M11** is coupled to the pixel **140**, and a first electrode of the eleventh transistor **M11** is coupled to a ground power source **GND**. A gate electrode of the eleventh transistor **M11** is coupled to its own second electrode. That is, the eleventh transistor **M11** is diode-coupled so that current can flow from the pixel **140** to the ground power source **GND**.

The twelfth transistor **M12** is coupled between the current supply unit **182** and the ground power source **GND**. A gate electrode of the twelfth transistor **M12** is coupled to the gate electrode of the eleventh transistor **M11**. That is, the twelfth transistor **M12** is coupled in the form of a current mirror to the eleventh transistor **M11**. A common node of the twelfth transistor **M12** and the current supply unit **182** is coupled to the error compensator **190**.

In the present invention, the twelfth transistor **M12** is formed to have a channel width wider than that of the eleventh transistor **M11** so that the amount of current can be amplified. For example, the twelfth transistor **M12** may be set so that the channel width of the twelfth transistor **M12** is i (i is an integer exceeding 1) times wider than that of the eleventh transistor **M11**.

The current supply unit **182** supplies a set or predetermined reference current i_{ref} to the twelfth transistor **M12**. Here, the reference current i_{ref} is set to have a previously fixed current value in the design process of the current supply unit **182**. For example, the reference current i_{ref} is set to have a current value lower than that of current i_{M12} flowing through the twelfth transistor **M12**.

An operation process of the amplifier will be described in more detail. A specific data signal is supplied to the data lines **D1** to **Dm**, corresponding to the scan signal progressively supplied to the scan lines **S1** to **Sn** during the sensing period. A control signal is progressively supplied to the control lines **CL1** to **CLn** during the sensing period. The voltage of the second power source **ELVSS** is controlled during the sensing period so that current does not flow in the organic light emitting diode **OLED**. Practically, in an embodiment of the present invention, the configuration in which the current provided to the sensing unit **170** via the first transistor **M1** during the sensing period is applicable to all various types of configurations currently known in the art.

The specific data signal is supplied to the pixel circuit **142**. If the third transistor **M3** is turned on, a first current, i.e., pixel current i_{ft} is supplied from the first transistor **M1** to the amplifier **180**. Here, the pixel current i_{ft} is determined, corresponding to the threshold voltage and mobility of the first transistor. **M1** included in each pixel.

The first current i_{ft} supplied from the pixel circuit **142** is supplied to the ground power source **GND** via the diode-coupled eleventh transistor **M11**. In this case, the second

current i_{M12} , which is i times greater than the pixel current i_{ft} , flows through the twelfth transistor $M12$ coupled in the form of the current mirror to the eleventh transistor $M11$. Since the second current i_{M12} is set to be greater than the reference current i_{ref} , a third current i_{out} is supplied from the error compensator **190**.

Here, the reference current i_{ref} is set (or predetermined) to have a low current value, corresponding to the specific data signal. Then, the third current i_{out} is set to have a current value higher than that of the first current i_{ft} . That is, the amplifier **180** generates the third current i_{out} that is a high current value, using the first current i_{ft} that is a micro-current.

FIG. 6 is a circuit diagram illustrating an embodiment of the current supply unit shown in FIG. 5.

Referring to FIG. 6, the current supply unit **182** according to this embodiment includes a plurality of current sources I_s , and a switch SW coupled between each current source I_s and a third power source VDD .

The current source I_s supplies a set current. The switch SW is coupled between the third power source VDD and each current power source I_s so as to control whether the current is supplied from the current source I_s . Practically, the turn-on/turn-off of the switch SW is controlled so that a desired reference current i_{ref} can be supplied, in consideration of characteristics of a panel, etc.

FIG. 7 is a circuit diagram illustrating an error compensator according to an embodiment of the present invention.

Referring to FIG. 7, the error compensator **190** according to this embodiment includes a first operational amplifier (OP-AMP) **192**, a second OP-AMP **194**, a first switch $SW1$, a second switch $SW2$, a third switch $SW3$, a fourth switch $SW4$, a first capacitor $C1$, a first storage unit **196** and a second storage unit **198**.

A first input terminal (negative input terminal: $-$) of the first OP-AMP **192** is coupled to the amplifier **180** via the third switch $SW3$, and a second input terminal (positive input terminal: $+$) of the first OP-AMP **192** receives a first reference voltage V_{ref1} . A first output terminal of the first OP-AMP **192** is coupled to the first storage unit **196**. The first OP-AMP **192** provides the first storage unit **196** with the voltage input from the amplifier **180** while being operated as a buffer or integrator.

The first switch $SW1$ is coupled between the first input terminal ($-$) and the first output terminal of the first OP-AMP **192**. In a case where the first switch $SW1$ is turned on, the first OP-AMP **192** is driven as a buffer. In a case where the first switch $SW1$ is turned off, the first OP-AMP **192** is driven as an integrator. To this end, the first capacitor $C1$ is coupled in parallel to the first switch $SW1$ between the first input terminal ($-$) and the first output terminal of the first OP-AMP **192**.

The third switch $SW3$ is coupled between the first input terminal ($-$) of the first OP-AMP **192** and the amplifier **180**. The third switch $SW3$ controls the electrical coupling between the first OP-AMP **192** and the amplifier **180** while being turned on and turned off.

In addition, when the third switch $SW3$ is turned on, the third current i_{out} described above is supplied to the amplifier **180**. Here, the third current i_{out} is supplied from a virtual current source (or voltage source). The first OP-AMP **192** inversely amplifies a voltage corresponding to the third current i_{out} and provides the inversely amplified voltage to the first storage unit **196**.

A first input terminal ($-$) of the second OP-AMP **194** is coupled to the first storage unit **196**, and a second input terminal ($+$) of the second OP-AMP **194** receives a second reference voltage V_{ref2} . A second output terminal of the

second OP-AMP **194** is coupled to the ADC **200** via the fourth switch $SW4$. The second OP-AMP **194** supplies the voltage provided from the first storage unit **196** to the ADC **200** while being operated as a buffer or integrator.

The second switch $SW2$ is coupled between the first input terminal ($-$) and the second output terminal of the second OP-AMP **194**. In a case where the second switch $SW2$ is turned on, the second OP-AMP **194** is driven as a buffer. In a case where the second switch $SW2$ is turned off, the second OP-AMP **194** is driven as an integrator. Meanwhile, in an embodiment of the present invention, the first and second reference voltages V_{ref1} and V_{ref2} are experimentally determined as reference voltages for inversion amplification, in consideration of the characteristics of the panel.

The fourth switch $SW4$ is coupled between the second output terminal of the second OP-AMP **194** and the ADC **200**. The fourth switch $SW4$ controls the electrical coupling between the second OP-AMP **194** and the ADC **200** while being turned on and turned off.

The first storage unit **196** is coupled between the first output terminal and the first input terminal ($-$) of the first OP-AMP **192**. Error component existing between the third switch $SW3$ and the ADC **200**, e.g., offsets, line resistances, noises and element characteristics of the first and second OP-AMPs **192** and **194** are stored in the first storage unit **196**. To this end, the first storage unit **196** includes a fifth switch $SW5$, a third capacitor $C3$ and a sixth switch $SW6$, which are coupled in parallel between the first output terminal and the first input terminal ($-$) of the first OP-AMP **192**, and a seventh switch $SW7$, a fourth capacitor $C4$ and an eighth switch $SW8$, which are coupled in parallel to the fifth switch $SW5$, the third capacitor $C3$ and the sixth switch $SW6$ between the first output terminal and the first input terminal ($-$) of the first OP-AMP **192**.

The fifth and sixth switches $SW5$ and $SW6$ store an error component in the third capacitor $C3$ while being simultaneously turned on. The seventh and eighth switches $SW7$ and $SW8$ store an error component in the fourth capacitor $C4$ while being turned on at a time different from that when the fifth switch $SW5$ is turned on.

The second storage unit **198** stores a voltage corresponding to the third current i_{out} , except the error component stored in the first storage unit **196** and the error component of the amplifier **180** (circuit characteristics and error components for amplification). To this end, the first storage unit **196** includes a second capacitor $C2$, and ninth to twelfth switches $SW9$ to $SW12$.

The second capacitor $C2$ is coupled between tenth and eleventh nodes $N10$ and $N11$. The second capacitor $C2$ stores a specific voltage except error components.

The eleventh switch $SW11$ is coupled between the tenth node $N10$ and the first input terminal ($-$) of the second OP-AMP **194**. The twelfth switch $SW12$ is coupled between the eleventh node $N11$ and the second output terminal of the second OP-AMP **194**. The eleventh and twelfth switches $SW11$ and $SW12$ store a predetermined voltage in the second capacitor $C2$ while being simultaneously turned on and turned off.

The ninth switch $SW9$ is coupled between the eleventh node $N11$ and the first input terminal ($-$) of the second OP-AMP **194**. The tenth switch $SW10$ is coupled between the tenth node $N10$ and the second output terminal of the second OP-AMP **194**. The ninth and tenth switches $SW9$ and $SW10$ store a set voltage in the second capacitor $C2$ while being simultaneously turned on and turned off. Here, the turn-on periods of the ninth and eleventh switches $SW9$ and $SW11$ do not overlap with each other.

FIG. 8 is a waveform diagram illustrating an operation process of the error compensator shown in FIG. 7.

Referring to FIG. 8, the first switch SW1, the second switch SW2, the fourth switch SW4, the fifth switch SW5 and the sixth switch SW6 are turned on during a first period T1.

If the fourth switch SW4 is turned on, the ADC 200 and the second output terminal of the second OP-AMP 194 are electrically coupled to each other.

If the first switch SW1 is turned on, the first OP-AMP 192 is coupled in the form of a buffer. Then, the first reference voltage Vref1 is applied to the first output terminal of the first OP-AMP 192 due to virtual ground characteristics of the OP-AMP.

If the second switch SW2 is turned on, the second OP-AMP 194 is coupled in the form of a buffer. Then, the second reference voltage Vref2 is applied to the second output of the second OP-AMP 194 due to the virtual ground characteristics of the OP-AMP.

If the fifth switch SW5 is turned on, the first output terminal of the first OP-AMP 192 and one terminal of the third capacitor C3 are electrically coupled to each other. If the sixth switch SW6 is turned on, the second output terminal of the second OP-AMP 194 and the other terminal of the third capacitor C3 are electrically coupled to each other. In this case, the third capacitor C3 ideally stores a voltage corresponding to the difference between the first and second reference voltages Vref1 and Vref2. However, practically, a set voltage including error components (e.g., offsets, line resistances, noises and element characteristics of the OP-AMPs) is stored in the third capacitor C3. Practically, error components from the third switch SW3 to the ADC 200 are stored in the form of voltage in the third capacitor C3 during the first period T1.

The first switch SW1, the second switch SW2, the fourth switch SW4, the seventh switch SW7 and the eighth switch SW8 are turned on during a second period T2.

If the first switch SW1 is turned on, the first reference voltage Vref1 is applied to the first output terminal of the first OP-AMP 192. If the second switch SW2 is turned on, the second reference voltage Vref2 is applied to the second output terminal of the second OP-AMP 194.

If the seventh switch SW7 is turned on, the first output terminal of the first OP-AMP 192 and one terminal of the fourth capacitor C4 are electrically coupled to each other. If the eighth switch SW8 is turned on, the other terminal of the fourth capacitor C4 and the second output terminal of the second OP-AMP 194 are electrically coupled to each other. In this case, a set voltage including an error component of the error compensator 190 is charged in the fourth capacitor C4. For example, the same voltage as that of the third capacitor C3 is stored in the fourth capacitor C4. Subsequently, for convenience of illustration, it is assumed that the same voltage is stored in the third and fourth capacitors C3 and C4.

The third switch SW3, the fifth switch SW5, the sixth switch SW6, the ninth switch SW9 and the tenth switch SW10 are turned on during a third period T3. The third period is set to be a short time period so that only the error component of the amplifier 180 is supplied to the error compensator 190. In other words, the third switch SW3 is instantaneously turned on and then turned off so that the voltage corresponding to the third current iout is not applied to the first input terminal (-) of the first OP-AMP 192.

Then, a set voltage including the error component of the amplifier 180 is applied to the first input terminal (-) of the first OP-AMP 192 during the third period T3. The first OP-AMP 192 inversely amplifies a predetermined voltage and

supplies a first voltage to the first output terminal of the first OP-AMP 192 while being driven as an integrator during the third period T3.

The first voltage output to the first output terminal of the first OP-AMP 192 is supplied to the first input terminal (-) of the second OP-AMP 194 by coupling of the third capacitor C3. In this case, the first voltage is changed into a second voltage, corresponding to the voltage stored in the third capacitor C3. Here, an error component of the error compensator 190 is additionally included in the second voltage. Meanwhile, since the ninth and tenth switches SW9 and SW10 are turned on, the second voltage is stored in the second capacitor C2. Subsequently, for convenience of illustration, it is assumed that when the eleventh node N11 is coupled to the first input terminal (-) of the second OP-AMP 194, a voltage in the reverse direction is stored in the second capacitor C2. In addition, it is assumed that when the tenth node N10 is coupled to the first input terminal (-) of the second OP-AMP 194, a voltage in the forward direction is stored in the second capacitor C2. In this case, the second voltage in the reverse direction is stored in the second capacitor C2 during the third period T3.

Subsequently, the third switch SW3, the seventh switch SW7, the eighth switch SW8, the eleventh switch SW11 and the twelfth switch SW12 are turned on during a fourth period T4. Here, the fourth period T4 is set to a period wider than the third period T3.

If the third switch SW3 is turned on during the fourth period T4, a third voltage corresponding to the third current iout is applied to the first input terminal (-) of the first OP-AMP 192. Here, the fourth period T4 is set to a sufficiently wide time so that the third voltage can be stably applied. The first OP-AMP 192 inversely amplifies the third voltage and supplies the inversely amplified voltage to the first output terminal of the first OP-AMP 192 while being driven as an integrator during the fourth period T4. The voltage supplied to the first output terminal of the first OP-AMP 192 is changed into a fourth voltage by coupling of the fourth capacitor C4 so that the fourth voltage is supplied to the first input terminal (-) of the second OP-AMP 194. In this case, the eleventh and twelfth switches SW11 and SW12 are turned on, and hence the fourth voltage in the forward direction is stored in the second capacitor C2.

Meanwhile, the error components are offset by the second voltage in the reverse direction, stored in the second capacitor C2 during the third period T3, and the fourth voltage in the forward direction, stored in the second capacitor C2 during the fourth period T4. In other words, a set voltage corresponding to the third current iout is charged in the second capacitor C2 during the fourth period T4, regardless of the error components of the amplifier 180 and the error compensator 190.

Subsequently, the fourth switch SW4, the eleventh switch SW11 and the twelfth switch SW12 are turned on during a fifth period T5. If the fourth switch SW4 is turned on, the ADC 200 and the second output terminal of the second OP-AMP 194 are electrically coupled to each other. If the eleventh switch SW11 is turned on, the tenth node N10 is coupled to the first input terminal (-) of the second OP-AMP 194. If the twelfth switch SW12 is turned on, the eleventh node N11 is coupled to the second output terminal of the second OP-AMP 194. Then, the second OP-AMP 194 supplies, to the ADC 200, a set voltage corresponding to the set voltage stored in the second capacitor C2. The ADC 200 converts a set voltage supplied thereto into a digital value, and stores the converted digital value in the memory 210.

Practically, in an embodiment of the present invention, the threshold voltage and mobility information of the driving

13

transistor included in each pixel **140** is extracted by repeating the aforementioned procedure during the sensing period. As described above, in an embodiment of the present invention, only pure information from which the error components of the amplifier **180** and the error compensator **190** are removed may be extracted, and accordingly, the accuracy of compensation can be improved. In addition, the error compensator **190** according to this embodiment is used to extract only a desired voltage by removing error components, and can be applied to various circuits for amplifying a predetermined current and/or voltage.

FIG. **9** is a circuit diagram illustrating another embodiment of the amplifier. In FIG. **9**, components identical to those of FIG. **5** are designated by like reference numerals, and their detailed descriptions will be omitted.

Referring to FIG. **9**, the amplifier **180** according to this embodiment includes a current supply unit **182**, an eleventh transistor **M11'**, a twelfth transistor **M12'**, a twentieth switch **SW20**, a twenty-first switch **SW21** and a twenty-second switch **22**.

The eleventh transistor **M11'** is coupled between the pixel **140** and the ground power source GND. The twentieth switch **SW20** is formed between the pixel **140** and a gate electrode of the eleventh transistor **M11'**. When the twentieth switch **SW20** is turned on, the eleventh transistor **M11'** is diode-coupled so that current can flow from the pixel **140** and the ground power source GND.

The twelfth transistor **M12'** is coupled between the current supply unit **182** and the ground power source GND. A gate electrode of the twelfth transistor **M12'** is coupled to the gate electrode of the eleventh transistor **M11'**. That is, the twelfth transistor **M12'** is coupled in the form of a current mirror to the eleventh transistor **M11'**.

The twenty-first switch **SW21** is coupled between the gate electrode of the eleventh transistor **M11'** and the ground power source GND. If the twenty-first switch **SW21** is turned on, the ground power source GND is supplied to the gate electrodes of the eleventh and twelfth transistors **M11'** and **M12'**, and accordingly, the eleventh and twelfth transistors **M11'** and **M12'** are turned off.

The twenty-second switch **SW22** is formed between the pixel **140** and a common terminal of the current supply unit **182** and the error compensator **190**. If the twenty-second switch **SW22** is turned on, the pixel **140**, the current supply unit **182** and the error compensator **190** are electrically coupled to one another.

FIG. **10** is a waveform diagram illustrating an operation process of the amplifier shown in FIG. **9**.

Referring to FIG. **10**, it is assumed that the third transistor **M3** included in the pixel **140** is first turned on during the sensing period.

The twentieth switch **SW20** is turned on during a period in which the threshold voltage information of the first transistor **M1** is extracted in the sensing period. If the twentieth switch **SW20** is turned on, the eleventh transistor **M11'** is diode-coupled. In this case, the amplifier **180** shown in FIG. **9** is driven identically to the amplifier **180** shown in FIG. **4**, and therefore, its detailed description will be omitted.

The twenty-first and twenty-second switches **SW21** and **SW22** are turned on during a period in which the degradation information of the organic light emitting diode OLED is extracted in the sensing period. If the twenty-first switch **SW21** is turned on, the eleventh and twelfth transistors **M11'** and **M12'** are turned off.

If the twenty-second switch **SW22** is turned on, the reference current i_{ref} from the current supply unit **182** is supplied to the second power source ELVSS via the anode electrode of

14

the organic light emitting diode OLED. In this case, a set voltage corresponding to the reference current i_{ref} is applied to the organic light emitting diode OLED.

The resistance is changed corresponding to the degree of degradation of the organic light emitting diode OLED, and accordingly, degradation information is included in the set voltage applied to the organic light emitting diode OLED, corresponding to the reference current i_{ref} . The set voltage applied to the organic light emitting diode OLED is supplied to the error compensator **190**.

That is, the amplifier **180** according to this embodiment can extract the degradation information of the organic light emitting diode OLED and the threshold voltage information of the first transistor **M1** from the pixel **140** while being driven as a current source or current sink source. In addition, the operation process of the error compensator **190** is identical to that described above, and therefore, its detailed description will be omitted.

While the present invention has been described in connection with certain exemplary embodiments, it is to be understood that the invention is not limited to the disclosed embodiments, but, on the contrary, is intended to cover various modifications and equivalent arrangements included within the spirit and scope of the appended claims, and equivalents thereof.

What is claimed is:

1. An organic light emitting display device, comprising:
a plurality of pixels each having a driving transistor and an organic light emitting diode; and

a sensing unit for extracting at least one of a first information including a threshold voltage of the driving transistor or a second information including a degradation of the organic light emitting diode from a pixel of the pixels,

wherein the sensing unit includes:

an amplifier for amplifying a voltage corresponding to the at least one of the first information or the second information;

an error compensator for compensating for error components of elements included in the amplifier and the error compensator; and

an analog-digital converter for converting an output of the error compensator,

wherein the error compensator is coupled between the amplifier and the analog-digital converter, the error compensator comprising:

a first operational amplifier (OP-AMP) and a second OP-AMP;

a first switch and a first capacitor, coupled in parallel between a first input terminal and an output terminal of the first OP-AMP;

a second switch coupled between a first input terminal and an output terminal of the second OP-AMP;

a first storage unit coupled between the output terminal of the first OP-AMP and the first input terminal of the second OP-AMP, and for changing a voltage at the output terminal of the first OP-AMP and supplying the changed voltage to the first input terminal of the second OP-AMP; and

a second storage unit coupled between the first input terminal and the output terminal of the second OP-AMP, and

wherein the second storage unit comprises:

a second capacitor coupled between tenth and eleventh nodes;

a ninth switch coupled between the eleventh node and the first input terminal of the second OP-AMP;

15

a tenth switch coupled between the tenth node and the output terminal of the second OP-AMP;
 an eleventh switch coupled between the tenth node and the first input terminal of the second OP-AMP; and
 a twelfth switch coupled between the eleventh node and the output terminal of the second OP-AMP.

2. The organic light emitting display device of claim 1, wherein the error components include offset characteristics, noises and line resistances of the elements.

3. The organic light emitting display device of claim 1, wherein the amplifier includes:

- an eleventh transistor comprising a second electrode coupled to the pixel, a first electrode coupled to a ground power source, and a gate electrode coupled to the second electrode so that current flows from the pixel to the ground power source;
- a twelfth transistor coupled in the form of a current mirror to the eleventh transistor; and
- a current supply unit for supplying a reference current to the eleventh transistor.

4. The organic light emitting display device of claim 3, wherein the twelfth transistor is formed to have a channel width wider than that of the eleventh transistor.

5. The organic light emitting display device of claim 3, wherein the reference current is set to have a current value lower than that of a second current to be flowed in the twelfth transistor, the second current mirroring a first current supplied to the eleventh transistor.

6. The organic light emitting display device of claim 3, wherein a common terminal of the current supply unit and the twelfth transistor is coupled to the error compensator.

7. The organic light emitting display device of claim 3, wherein the amplifier further includes:

- a twentieth switch positioned between the gate electrode and the second electrode of the eleventh transistor;
- a twenty-first switch coupled between the ground power source and the gate electrodes of the eleventh and twelfth transistors; and
- a twenty-second switch coupled between the pixel and a common terminal of the current supply unit and the twelfth transistor.

8. The organic light emitting display device of claim 7, wherein the twentieth switch is configured to be turned on during a period in which the first information is extracted, and the twenty-first and twenty-second switches are configured to be turned on during a period in which the second information is extracted.

9. The organic light emitting display device of claim 1, wherein the error compensator includes:

- a first operational amplifier (OP-AMP) and a second OP-AMP;
- a first switch and a first capacitor, coupled in parallel between a first input terminal and an output terminal of the first OP-AMP;
- a second switch coupled between a first input terminal and an output terminal of the second OP-AMP;
- a third switch coupled between the first input terminal and the amplifier;
- a fourth switch coupled between the analog-digital converter and the output terminal of the second OP-AMP;
- a first storage unit coupled between the output terminal of the first OP-AMP and the first input terminal of the second OP-AMP; and
- a second storage unit coupled between the first input terminal and the output terminal of the second OP-AMP.

10. The organic light emitting display device of claim 9, wherein a first reference power source is supplied to a second

16

input terminal of the first OP-AMP, and a second reference power source is supplied to a second input terminal of the second OP-AMP.

11. The organic light emitting display device of claim 9, wherein the first storage unit includes:

- a fifth switch, a third capacitor and a sixth switch, coupled in series between the output terminal of the first OP-AMP and the first input terminal of the second OP-AMP; and

- a seventh switch, a fourth capacitor and an eighth switch, coupled in parallel to the fifth switch, the third capacitor and the sixth switch, between the output terminal of the first OP-AMP and the first input terminal of the second OP-AMP.

12. The organic light emitting display device of claim 11, wherein the fifth and sixth switches are configured to be turned on during a first period in the period in which the first and second switches are turned on, and the seventh and eighth switches are configured to be turned on during a second period not overlapping with the first period in the period in which the first and second switches are turned on.

13. The organic light emitting display device of claim 12, wherein the fourth switch is configured to be also set to be in a turn-on state during the first and second periods.

14. An organic light emitting display device, comprising:

- a plurality of pixels each having a driving transistor and an organic light emitting diode; and

- a sensing unit for extracting at least one of a first information including a threshold voltage of the driving transistor or a second information including a degradation of the organic light emitting diode from a pixel of the pixels,

wherein the sensing unit includes:

- an amplifier for amplifying a voltage corresponding to the at least one of the first information or the second information; and

- an error compensator for compensating for error components of elements included in the amplifier and the error compensator,

wherein the error compensator includes:

- a first operational amplifier (OP-AMP) and a second OP-AMP;

- a first switch and a first capacitor, coupled in parallel between a first input terminal and an output terminal of the first OP-AMP;

- a second switch coupled between a first input terminal and an output terminal of the second OP-AMP;

- a third switch coupled between the first input terminal and the amplifier;

- a fourth switch coupled between an external analog-digital converter and the output terminal of the second OP-AMP;

- a first storage unit coupled between the output terminal of the first OP-AMP and the first input terminal of the second OP-AMP; and

- a second storage unit coupled between the first input terminal and the output terminal of the second OP-AMP,

wherein the first storage unit includes:

- a fifth switch, a third capacitor and a sixth switch, coupled in series between the output terminal of the first OP-AMP and the first input terminal of the second OP-AMP; and

- a seventh switch, a fourth capacitor and an eighth switch, coupled in parallel to the fifth switch, the third capaci-

17

tor and the sixth switch, between the output terminal of the first OP-AMP and the first input terminal of the second OP-AMP, and

wherein the second storage unit includes:

a second capacitor coupled between tenth and eleventh nodes;

a ninth switch coupled between the eleventh node and the first input terminal of the second OP-AMP;

a tenth switch coupled between the tenth node and the output terminal of the second OP-AMP;

an eleventh switch coupled between the tenth node and the first input terminal of the second OP-AMP; and

a twelfth switch coupled between the eleventh node and the output terminal of the second OP-AMP.

15. The organic light emitting display device of claim 14, wherein the fifth switch, the sixth switch, the ninth switch and the tenth switch are configured to be turned on during a third period in the period in which the third switch is turned on, and the seventh switch, the eighth switch, the eleventh switch and the twelfth switch are configured to be turned on during a fourth period not overlapping with the third period in the period in which the third switch is turned on.

16. The organic light emitting display device of claim 15, wherein the fourth period is set to be longer than the third period.

17. The organic light emitting display device of claim 15, wherein the fourth switch, the eleventh switch and the twelfth switch are configured to be turned on during a period after the fourth period.

18. The organic light emitting display device of claim 1, further comprising:

a data driver for supplying a data signal to data lines coupled to the pixels;

a scan driver for supplying a scan signal to scan lines coupled to the pixels; and

a timing controller for changing bits of data supplied from the outside thereof and providing the data driver with the changed bits, corresponding to the at least one of the first information or the second information.

19. The organic light emitting display device of claim 18, wherein the sensing unit further includes:

the analog-digital converter for converting a voltage supplied from the error compensator into a digital value; and a memory for storing the digital value and providing the stored value to the timing controller so that the bits of the data are changed.

20. The organic light emitting display device of claim 1, wherein each of the pixels includes another transistor coupled between the sensing unit and a common node between the driving transistor and the organic light emitting diode, and is configured to be turned on during the period in which the at least one of the first information or the second information is extracted.

21. An error compensator, comprising:

a first operational amplifier (OP-AMP) and a second OP-AMP;

18

a first switch and a first capacitor, coupled in parallel between a first input terminal and an output terminal of the first OP-AMP;

a second switch coupled between a first input terminal and an output terminal of the second OP-AMP;

a first storage unit coupled between the output terminal of the first OP-AMP and the first input terminal of the second OP-AMP, and for changing a voltage at the output terminal of the first OP-AMP and supplying the changed voltage to the first input terminal of the second OP-AMP; and

a second storage unit coupled between the first input terminal and the output terminal of the second OP-AMP, wherein the second storage unit comprises:

a second capacitor coupled between tenth and eleventh nodes;

a ninth switch coupled between the eleventh node and the first input terminal of the second OP-AMP;

a tenth switch coupled between the tenth node and the output terminal of the second OP-AMP;

an eleventh switch coupled between the tenth node and the first input terminal of the second OP-AMP; and

a twelfth switch coupled between the eleventh node and the output terminal of the second OP-AMP.

22. The error compensator of claim 21, wherein a first reference power source is supplied to a second input terminal of the first OP-AMP, and a second reference power source is supplied to a second input terminal of the second OP-AMP.

23. The error compensator of claim 22, wherein the first input terminal is a negative (−) input terminal, and the second input terminal is a positive (+) input terminal.

24. The error compensator of claim 21, wherein the first storage unit includes:

a fifth switch, a third capacitor and a sixth switch, coupled in series between the output terminal of the first OP-AMP and the first input terminal of the second OP-AMP; and

a seventh switch, a fourth capacitor and an eighth switch, coupled in parallel to the fifth switch, the third capacitor and the sixth switch between the output terminal of the first OP-AMP and the first input terminal of the second OP-AMP.

25. The error compensator of claim 24, wherein the fifth and sixth switches are configured to be turned on during a first period in the period in which the first and second switches are turned on, and the seventh and eighth switches are configured to be turned on during a second period not overlapping with the first period in the period in which the first and second switches are turned on.

26. The error compensator of claim 24, wherein, after a set voltage is charged in the third and fourth capacitors, the fifth switch, the sixth switch, the ninth switch and the tenth switch are configured to be turned on so that a voltage is primarily stored in the second capacitor, and the seventh switch, the eighth switch, the eleventh switch and the twelfth switch are configured to be turned on so that a voltage is secondarily stored in the second capacitor.

* * * * *

专利名称(译)	误差补偿器和使用其的有机发光显示装置		
公开(公告)号	US9424770	公开(公告)日	2016-08-23
申请号	US13/941356	申请日	2013-07-12
[标]申请(专利权)人(译)	金甫娟 KWON OH JO AHN金喜善		
申请(专利权)人(译)	KIM , BO-YEON KWON , OH-JO AHN , 金喜善		
当前申请(专利权)人(译)	三星DISPLAY CO. , LTD.		
[标]发明人	KIM BO YEON KWON OH JO AHN HEE SUN		
发明人	KIM, BO-YEON KWON, OH-JO AHN, HEE-SUN		
IPC分类号	G09G3/32 H03K17/30		
CPC分类号	G09G3/3233 G09G3/3208 H03K17/30 G09G3/3291 G09G2300/0842 G09G2320/0295 G09G2320/043 G09G2320/045		
审查员(译)	常 , KENT		
优先权	1020120139059 2012-12-03 KR		
其他公开文献	US20140152642A1		
外部链接	Espacenet USPTO		

摘要(译)

误差补偿器和使用该误差补偿器的有机发光显示装置。有机发光显示装置包括各自具有驱动晶体管和有机发光二极管的像素;传感单元从像素的像素中提取包括驱动晶体管的阈值电压的第一信息或包括有机发光二极管的劣化的第二信息中的至少一个。在有机发光显示装置中, 感测单元包括放大器, 其放大与第一信息或第二信息中的至少一个相对应的电压; 和误差补偿器补偿放大器和误差补偿器中包含的元件的误差分量。

